

# VN|VERKET

25.-26.  
AUGUST  
2023

40°26'46"N 79°58'56"Ø

Svenskveien 101, N-8626 Mo i Rana

- |                          |            |
|--------------------------|------------|
| 1. Introduction          | (page 1)   |
| 2. Festival Contact List | (page 2)   |
| 3. Location              | (page 3)   |
| 4. Hospitality           | (page 4-5) |
| 5. Technical Production  | (page 6-7) |
| 6. Lightplot & patch     | (page 8-9) |
| 7. Backline              | (Page 9)   |

## **Introduction:**

Welcome to Verket 2023! We are looking forward to you joining us for this year's edition of the festival

In this document you will find useful contacts for advancing and an overview of the stage and technical equipment the festival will be providing as a standard.

*Please note any equipment not mentioned in this or any other festival document will not be considered as a standard, most equipment can be provided, but solely at the artists/bands cost, all requests must be addressed to, and agreed with, the festival production manager in advance!*

# FESTIVAL CONTACTS

<b>Contractual party:</b>	Verket Musikkfestival AS NO 999 182 852
<b>Office &amp; postal address:</b>	C/o Økonomene AS Kirkegata 10 8622 Mo i Rana
<b>Website:</b>	<a href="http://www.verketfestival.no/">http://www.verketfestival.no/</a>
<b>Booking:</b>	Hans Petter Haaland Tel: (+47) 977 39 697 Mail: hp@hes.no
<b>Production manager:</b>	Richard De Freitas Tel: (+47) 909 413 74 Mail: rich@upstage.no
<b>Head of Security:</b>	TBC
<b>Internal Transport:</b>	Nicholas Jensen Tel: (+47) 988 95 282 Mail: nicolas@verket.no
<b>Backstage Manager:</b>	Ørjan Torbergsen & Flemming Tel: (+47) 450 05 050 Mail: orjan@verket.no
.	

# LOCATION

## Map Information, Arrival, Parking

The festival site is located on Revelen in Mo i Rana in Norway. The festival area is located in beautiful surroundings only a few hundred meters from Mo Industrial Park and within comfortable walking distance from the center, Gruben, Selfors and Mjølan

The closest physical address is: Svenskveien 101, 8626 Mo I Rana [Google maps](#)



### General venue info:

The capacity is 5,500 per day. Floor arena: 7,000m<sup>2</sup>

### Arrival Mo i Rana airport/train station/other:

The airport in Mo i Rana (Røssvoll lufthavn, MQN) is situated 15 km outside the city center - approx. 20 minutes of driving.

The train station is situated 400 meters from the hotel.

Please send your arrival, and departure times with flight number to the production manager in good time to coordinate transport.

### Distances:

Airport to	Scandic Meyergården hotel:	15 km -	20 minutes drive away.
Hotel to	Venue:	3.6 km -	8 minutes drive away.
Venue to	Hospital:	2.1km -	6 minutes drive away.
Venue to	Police:	3.5 km -	6 minutes drive away.

### Nightliner, parking & landlines:

Please notify production early as possible if you will be arriving by nightliner. The festival can provide 230V - 16A outlets. On site parking is extremely limited. We can only offer parking to festival main headliner.

# HOSPITALITY

Backstage, Catering, Merchandise, Accreditation, etc

## Accreditation/band check in:

When arriving at venue or hotel you will be greeted by your band host. She or he will give you your accreditation.

## Festival hotel :

Scandic Meyergården Hotel  
Fridtjof Nansens gate 24-28,  
8624 Mo i Rana  
Tel: (+47) 75 13 40 00  
[Web](#)

Please note we will supply single rooms for single use and twin rooms for twin use – we will not supply twin rooms for single use due to capacity restraints at our festival hotel. The festival do not cover any hotel incidentalts such as minibar-expenses, any extra charges will be recharged to artist with 250kr administration fee. The festival does not pay hotel rooms buy-outs in any incident.

## Backstage / Dressing rooms

The Backstage area is open for the following hours:

Friday 16:00 - 01:00

Saturday 10:00 - 14:00 (no alcohol serving daytime) and 16:00 - 01:00

Our backstage tent is located between the two stages. Due to limited number of dressing rooms, All artist will be allocated access to their private rooms according to a timed schedule — 1 - one - hour before and after your show. Only one dressing room pr. artist. There is however a common green room area that all artists are welcome to stay in whilst the backstage is open

## Catering

Available during opening hours: bottled water, soft drinks, coffee, tea, fruit and vegetables, bread (dark and white), biscuits, milk, juice, butter, mustard, chocolate spread, jam, assorted cheeses and meat.

**Breakfast:** Served at hotel, 06:00 – 09:30 (mandag til fredag), 07:00 – 10:00 (lørdag), 08:00 – 11:00 (søndag)

**Dinner:** Served at our festival hotel Scandic Meyergården. Festival pay for dinner (buffet) + 1 beverages with vouchers for each member of the band and crew (crew list must be sent beforehand).

**Drinks:** Due to local alcohol laws all drinks to be served by the bartenders at the backstage bar.

*\*Festival will not supply aftershow food or bus stock.*

## Showers

Because of venue limitations there are no showers at the festival site, but at the festival hotel. For those of you traveling in a nightliner, please specify your need for shower rooms in the advance.

## Production Office

There will be a staffed festival production office at the premises. The production office staff will do their best to help you with any questions or need.

**Aftermovie:**

Throughout the whole festival Verket will be filming for our official aftermovie. Our film crew have full pit access and will be filming on and off stage. If you have any request/wishes please send them during the advance.

**Merchandise**

Artists may sell merchandise on the festival site from one of our stands. You must bring your own merch and supply our volunteers with your card terminal (no float/cash will be accepted as payment). If you would like to utilise the festival merch booth please let us know in advance.

**Artist production office:**

Unfortunately the festival cannot provide you with your own production office.

**WIFI:**

You are welcome to use our WIFI for free. Ask backstage staff on show day for password.

# TECHNICAL PRODUCTION

## COOP-STAGE

### On production day

We expect to have all artists on/off stage per schedule. All delays caused by your artists or crew, will reduce the length of your show. There is a stage manager on each stage. They will be in charge of the stage and the process during the production, please respect them. To make this as smooth as possible, we have rigging/production areas, rolling risers and good logistic solutions. You will get plenty of time to prepare behind the drapes before your changeover.

**Stage:** Width: 10.5 Meters  
Depth: 5 Meters  
Height: 1.8 Meters  
Clearance: 5 Meters

**Production Space:** **SL Wing: Monitor World**  
Width: 4 Meters  
Depth: 4 Meters

**FOH:** (1 x Floor) Width: 4 Meters  
Depth: 4 Meters

**FOH- Sound:** Allen & Heath dLive c1500 Alcontrol system controler

**PA:** 18x Alcons LR18 In line array congifuration  
8x Alcons BF362 Subs  
2x JBL VerTec4888DP-AN Front Fills

**Monitors:** Allen & Heath SQ5  
Wedges: 12x ALS 122W  
Drum Sub: 1x JBL VP Sub + ALS122A  
Sidefills: 8x JBL VP Top + Sub

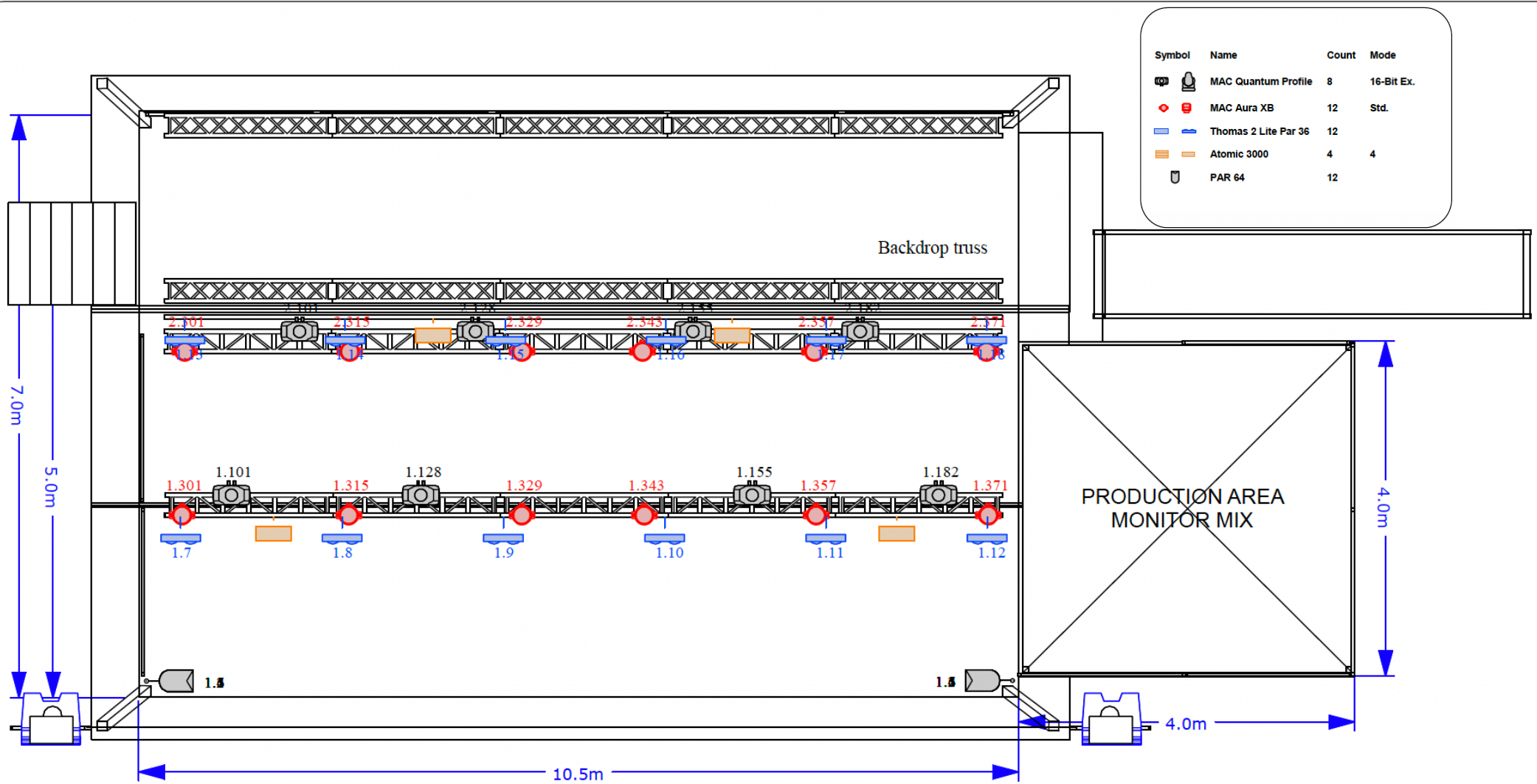
**Wireless:** The following frequencies are available for guest artists

<b>K28</b>	526 - 534 MHz
<b>K30-K33</b>	542 - 574 MHz
<b>K35</b>	582 - 590 MHz
<b>K37 - K38</b>	598 - 614 MHz
<b>K40 - K41</b>	622 - 638 MHz
<b>K43 - K44</b>	646 - 662 MHz
<b>K46 - K47</b>	670 - 686 MHz

**Touring consoles:** All artists that would like to bring a FOH or Monitor console to the festival must have prior approval by production. Any artist that has this approval should be self-contained. If you do require help with your production from the festival, with regards to line system or snakes etc, please let us know ASAP.

<b>Sound check:</b>	No sound checks over PA. Linecheck on headphones will occur in the set change before your performance only
<b>dB limit:</b>	To protect the ears, we choose to set a time averaged dB limit at 99dBA Leq/30 min at FOH position with a 130dBC peak. This is NON-NEGOTIABLE!. There will be a calibrated 10eazy system on FOH.
<b>FOH- Light:</b>	GrandMA2 Light
<b>Lights:</b>	8x Martin MAC Quantum Profile 12x Martin MAC Aura XB 4x Martin Atomic 3000 12x Pa6 64 12x 2-Lite Blinders Light plot and parch on following page
<b>Smoke/Haze:</b>	2x Hazebase Basehazer Pro 2x Jem ZR43 2x Antari Hurican 1500 DMX
<b>Followspots:</b>	No festival followspots
<b>Guest Power:</b>	Available on request
<b>Guest Multi/Cat5:</b>	We have 2 runs of Cat5 from FOH to stage- they are for shared use. Exclusive use is either rental or your own.
<b>Risers:</b>	Festival will supply rolling 1x2m riser modules. Available heights are 20cm and 40cm. Riser requests will depend on availability and space.
<b>Pyro:</b>	No pyro allowed
<b>Confetti:</b>	No confetti allowed

# LIGHTPLOT COOP-STAGE



PLAN



# BACKLINE

## COOP-STAGE

The following backline is available to share for all artists on this stage, this means no exclusive use and you will get access in the changeover.

<b>Drums:</b>	DW Collector Ebony Black 22" kick 10", 12", 14" Rack tom 16" Floor tom 14" Snare drum 1x High hat stand 2x Snare stands 4x Boom cymbal stands 1x Kick pedal 1x Drum throne 1x Drum rug
<b>Bass:</b>	1x Ampeg SVT 8X10" 1x Ampeg SVT classic 300w Head
<b>Guitar:</b>	1x Fender Twin 1x Fender 65 Delux Reverb 1x VOX AC30 TB
<b>Keyboard:</b>	1x Nordsstage3 88HA